

## 'LABGAS+' - Intelligent Gas Generators

'LABGAS+' is the latest range of Nitrogen PSA Laboratory Gas Generators from Noblegen Products.

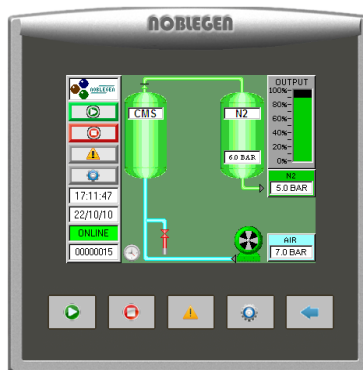
Utilising the reliable and efficient PSA technique of separating Nitrogen and Oxygen is used to produce high quality Nitrogen Gas at various flows and purities (see performance data sheets).

The Generators are controlled using the latest in HMI touch screen technology to display the process in real-time, inlet / outlet pressures, Trend graphs and much more.....



### Features

- Range of Flow-rates
- With or without Internal oil-free air compressor
- Compact and Quiet design
- Purity 99.9995% - 98%
- Auto-run facility
- Energy saving mode
- Outlet flow indicator (% flow)
- Trend graphs into MS excel
- Alarms with help menu
- Audible alarm sounder
- Remote access via internet



Colour HMI Touch Screen

### Applications

- Pharmaceutical & Laboratory:-
- General laboratory
- GC
- ELSD
- LC/MS
- ICP
- TurobVap

LABGAS+ Nitrogen Generator range from Noblegen Products is your reliable and efficient alternative to conventional high pressure cylinder and liquid gas supplies. Taking away the on-going costs, safety considerations and transportation of traditional gas supplies, the 'LABGAS+' on-site Nitrogen systems are some of the most advanced and intelligent available. The control system gives the user all the information necessary to ensure an efficient and consistent supply of gas is always available. From the process to flow and alarms, including auto-start / stop function, Trend graphs, service alarm and service records page, there is simply no other laboratory nitrogen system quite like LABGAS+.

The LABGAS+ is one of the most economical range of nitrogen generators on the market for both purchase price and on-going running / maintenance costs. Together with our unrivalled experience and knowledge of nitrogen gas generators with 1000's running world-wide supported by our national and international partners.

### Nitrogen Outlet Flowrate - NI/min vs Oxygen Concentration

Model	5ppm	100ppm	0.1%	0.5%	1.0%	2.0%	outlet pressure (psi g)	Dims -0	Dims -1
NG1	1.0	-	-	-	-	-	75.0	Size 1	Size 1
NG3	3.0	-	-	-	-	-	75.0	Size 3	Size 3
NG4	-	-	3.0	4.0	-	-	80.0	Size 2	Size 2
NG5	2.5	4.0	6.0	8.0	10.0	12.0	75.0	Size 3	Size 3
NG6	6.0	10.0	16.0	25.0	30.0	35.0	100	Size 3	Size 3

Specification based on 7barg (102psig) air inlet pressure @ 20°-25°C (68°-77°F) ambient air temperature. For inlet pressures and ambient air temperature outside these conditions please contact the Noblegen technical department.

### Specifications

Ambient Temp Range	5-30 °C (41-86 °F)
Air Inlet Pressure	8 bar g (116 psi g)
Nitrogen Outlet Pressure*	See table above
Air Inlet Requirement	Dew-point -40 °C (-40 °F)
	Particulate: <0.01 micron
	Oil: <0.01 mg/m <sup>3</sup>
Electrical Supply	230v a.c. / 1ph / 50-60Hz
	115v a.c. / 1ph / 50-60Hz
Socket Inlet	IEC type C14 (fused) 10A max
Inlet / Outlet Connections	1/4" BSPP

### Dimensions and Weights

Enclosure	Length	Width	Height	-0 Weight	-1 Weight
Size 1	300	320	650	45	50
Size 2	550	320	650	55	60
Size 3	660	400	700	85	125

Note: Dimensions in mm, weights in kgs.